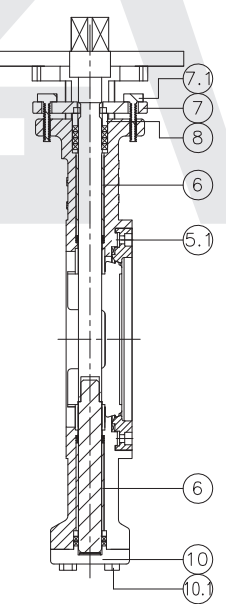
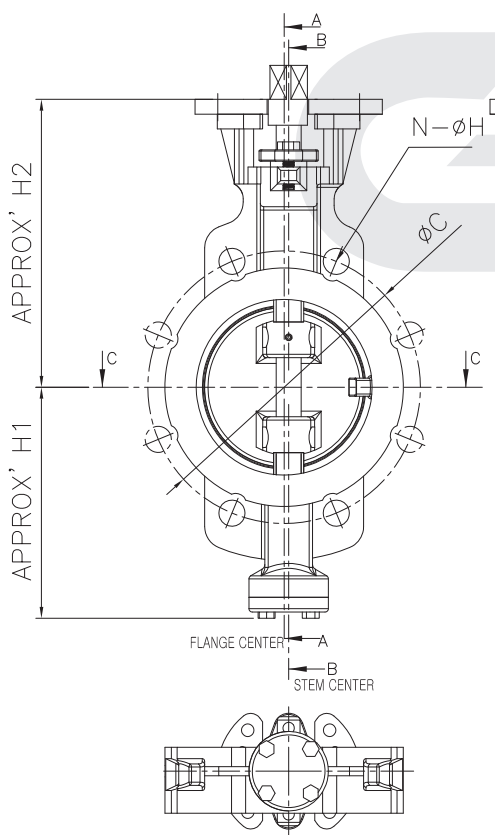
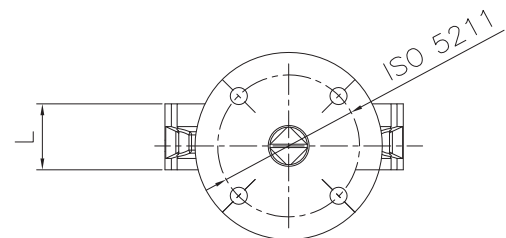
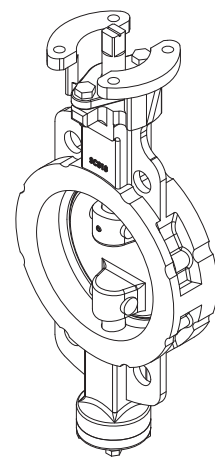


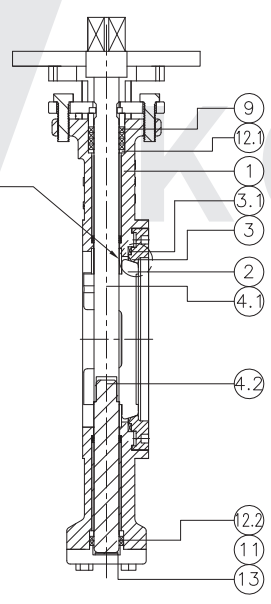
DIMENSIONS							UNIT: mm	MODEL No.
NOMINAL DIAMETER	L	FLANGE(NOTE.1)		REFERENCE				
		∅C	N-∅H	H1	H2	TOP MOUNT		
50A(2")	43	120	4-∅19	120	200	F07	G20-M-W-02-B	
65A(2 1/2")	46	140	4-∅19	135	210	F07	G20-M-W-2.5-B	
80A(3")	48	150	8-∅19	145	220	F07	G20-M-W-03-B	
100A(4")	54	175	8-∅19	165	230	F07	G20-M-W-04-B	
125A(5")	57	210	8-∅23	190	250	F07	G20-M-W-05-B	
150A(6")	57	240	8-∅23	210	270	F07	G20-M-W-06-B	
200A(8")	64	290	12-∅23	220	310	F10	G20-M-W-08-B	
250A(10")	71	355	12-∅25	280	360	F10	G20-M-W-10-B	

FLANGE RATING : JIS 10K (NOTE.1)

P.NO.	PART NAME	MATERIAL	Q'TY	REMARK
1	BODY	ST.ST.(NOTE.5)	1	
2	DISC	ST.ST.(NOTE.5)	1	with TCC COAT
3	RETAINER RING SEAT	ST.ST.(NOTE.5)	1	with TCC COAT
3.1	SEAT GASKET	GRAPHITE	1	
4.1	STEM(UPPER)	ST.ST.(NOTE.5)	1	
4.2	STEM(LOWER)	ST.ST.(NOTE.5)	1	
5.1	RETAINER BOLT	ST.ST.	12	
6	STEM BR	ST.ST.+PTFE COATING	2	
7	PACKING GLAND	ST.ST.	1	
7.1	PACKING GLAND BOLT/SW	ST.ST.	2	
8	GLAND RING	ST.ST.	1	
9	PACKING	GRAPHITE	1SET	
10	BOTTOM COVER	ST.ST.	1	
10.1	BOTTOM COVER BOLT,S/W	ST.ST.	4	
11	BOTTOM COVER GASKET	GRAPHITE	1	
12.1	ANTI-BLOW OUT RING-UP	ST.ST.	1	
12.2	ANTI-BLOW OUT RING-LW	ST.ST.	1	
13	BOTTOM COVER BR	TEFLON or ST.ST	1	

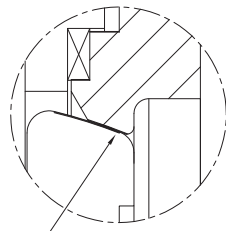


<FLANGE PART VIEW>



SECTION B-B

<STEM CENTER PART VIEW>



Retainer ring seat & Disc
ST.ST with TCC coated

NOTES

- The Flange rating on the drawing shall be in accordance with National Standard.
The rating shall be provided conforming 5K/10K/16K for JIS B2220 5K/10K/16K, 150LB for ANSI B 16.5 150LB, PN6/10/16 for ISO 7005 PN6/10/16.
- VALVE TEST : AS PER JIS F7480 or API598
- Shell Test (Working Pressure X 1.5)
EX. JIS 5K : 7.5 kg/cm²
- Seat Test (Working Pressure X 1.1)
EX. JIS 5K : 5.5 kg/cm²
- Flange Finish
- Wafer type : N/A
- Lug type : RF
- Flange type : FF
- Appearance of valve Flange rating Hole according to reference drawing
- Valve materials are subject to customer requirements.
- Please fill out the model number, flange Rating, Operation and material on the order form
- Design Standard : API 609
- Face to Face : API 609 CAT.B

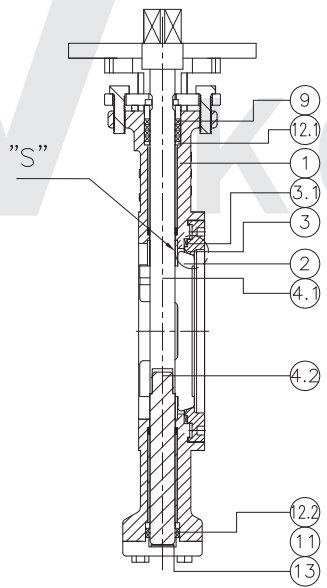
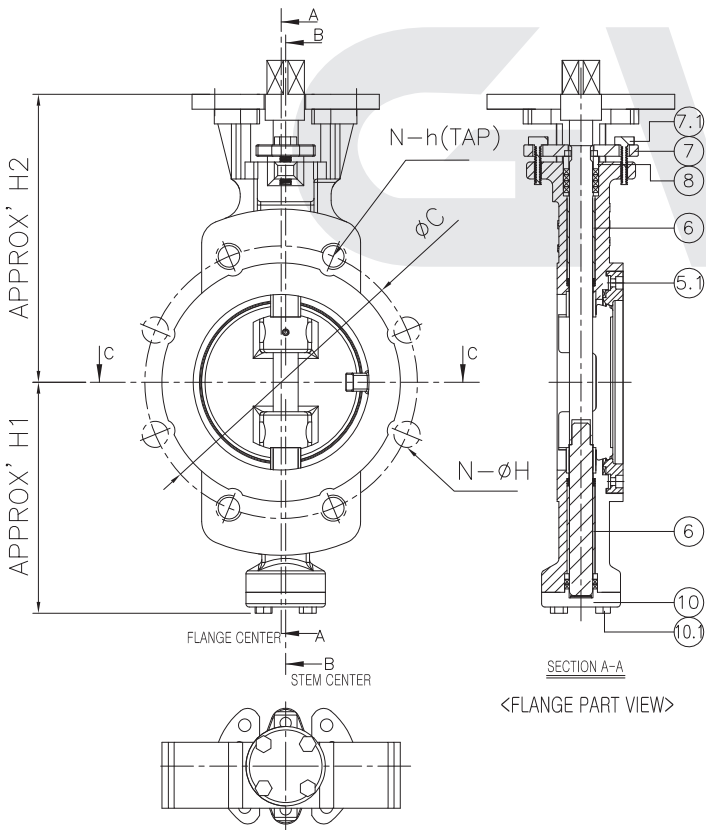
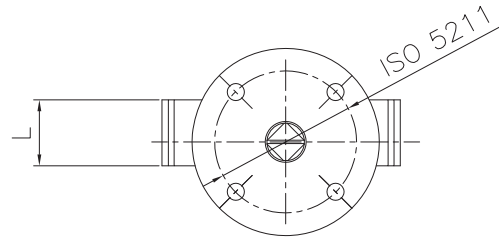
3						
2						
1	2022.05.06	FOR CONTRACT				
NO	DATE	DESCRIPTION	DRA.	DES.	CHK.	APP.
TITLE		DOUBLE ECC WAFER TYPE JIS 10K				
SUB.TITLE		METAL SETED BUTTERFLY VALVE				
DRA.	DES.	CHK.	APP.	SCALE	N. S	
J.H KIM		KEVIN.C	CG.LEE	DATE	2023.11.10	
				DWG/N	HWM0210BCA	



DIMENSIONS								UNIT: mm	MODEL No.
NOMINAL DIAMETER	L	FLANGE(NOTE.1)			REFERENCE				
		φC	N-h(TAP)	N-φH	H1	H2	TOP MOUNT		
300(12")	81	400	4-M22	12-φ25	310	390	F10	G20-M-SL-12-B	
350(14")	92	445	4-M22	12-φ25	350	450	F14	G20-M-SL-14-B	
400(16")	102	510	4-M24	12-φ27	390	500	F14	G20-M-SL-16-B	
450(18")	114	565	4-M24	16-φ27	420	560	F16	G20-M-SL-18-B	
500(20")	127	620	4-M24	16-φ27	450	570	F16	G20-M-SL-20-B	

FLANGE RATING : JIS 10K (NOTE.1)

P.NO.	PART NAME	MATERIAL	Q'TY	REMARK
1	BODY	ST.ST.(NOTE.5)	1	
2	DISC	ST.ST.(NOTE.5)	1	with TCC COAT
3	RETAINER RING SEAT	ST.ST.(NOTE.5)	1	with TCC COAT
3.1	SEAT GASKET	GRAPHITE	1	
4.1	STEM(UPPER)	ST.ST.(NOTE.5)	1	
4.2	STEM(LOWER)	ST.ST.(NOTE.5)	1	
5.1	RETAINER BOLT	ST.ST.	12	
6	STEM BR	ST.ST.+PTFE COATING	2	
7	PACKING GLAND	ST.ST.	1	
7.1	PACKING GLAND BOLT/SW	ST.ST.	2	
8	GLAND RING	ST.ST.	1	
9	PACKING	GRAPHITE	1SET	
10	BOTTOM COVER	ST.ST.	1	
10.1	BOTTOM COVER BOLT,S/W	ST.ST.	4	
11	BOTTOM COVER GASKET	GRAPHITE	1	
12.1	ANTI-BLOW OUT RING-UP	ST.ST.	1	
12.2	ANTI-BLOW OUT RING-LW	ST.ST.	1	
13	BOTTOM COVER BR	TEFLON or ST.ST	1	



Retainer ring seat & Disc
ST.ST with TCC coated

NOTES

- The Flange rating on the drawing shall be in accordance with National Standard.
The rating shall be provided conforming 5K/10K/16K for JIS B2220 5K/10K/16K, 150LB for ANSI B 16.5 150LB, PN6/10/16 for ISO 7005 PN6/10/16.
- VALVE TEST : AS PER JIS F7480 or API598
- Shell Test (Working Pressure X 1.5)
EX. JIS 5K : 7.5 kg/cm²
- Seat Test (Working Pressure X 1.1)
EX. JIS 5K : 5.5 kg/cm²
- Flange Finish
- Wafer type : N/A
- Lug type : RF
- Flange type : FF
- Appearance of valve Flange rating Hole according to reference drawing
- Valve materials are subject to customer requirements.
- Please fill out the model number, flange Rating, Operation and material on the order form
- Design Standard : API 609
- Face to Face : API 609 CAT.B

3						
2						
1	2022.05.06	FOR CONTRACT				
NO	DATE	DESCRIPTION	DRA.	DES.	CHK.	APP.
TITLE		DOUBLE ECC WAFER TYPE JIS 10K				
SUB.TITLE		METAL SETED BUTTERFLY VALVE				
DRA.	DES.	CHK.	APP.	SCALE	N. S	
J.H KIM		KEVIN.C	CG.LEE	DATE	2023.11.10	
				DWG/N	HWM1220BDA	

GW Korea Co.,Ltd.